



## MASTER OF SCIENCE

# DAMAGE : DisAster MAnaGement and Environmental Impact

### ACCREDITATION

Master agreed by the French Ministry of Higher Education and Research

### KEY WORDS

Disaster Management, Environment, Impact Assessment, Emergency Medicine, Project Management, human and Social Sciences, Information and Communication Technologies

### UNIVERSITY PROPOSING THE MASTER

École des mines d'Alès and Université de Nîmes

### LANGUAGE OF TEACHING

English

### COURSE AIMS

The Master of Science DAMAGE is defined at the interface of two fields of applications: disaster management and environmental impact assessment. This multidisciplinary approach will allow students to deepen their knowledge base by integrating an international dimension on large-scale crises. The proposed courses will allow to students to assess the risks (risk analysis methods), propose solutions for risk reduction and preparedness planning.

At the end of the two academic years, students should be able to critically analyze the

- different types of risks and their potential consequences.
- technical, human and organizational vulnerabilities
- human perception that influences the risk assessment

They will be able to propose and professionally analyze the management and coordination in the event of human or environmental catastrophe.

### PROGRAM

The organization of teaching modules is composed by of 120 ECTS credits over two academic years. The year M1 is constituted by the UE1 to UE6, year M2 consists of EU7 to EU10.

A Master internship (6 months) is representing 30 credits.

#### UE 1 : Risk assessment methods

- Principles and key concepts of Disaster management (risk reduction, response, mitigation, post catastrophe phase), risk (hazard, vulnerability and resilience)
- Principles of consequence evaluation (natural hazards, environmental pollutions, technological risks, health)
- Principles in vulnerability assessment and Geospatial analysis
- Case study

#### UE2 : Humanitarian emergencies

- Principles in humanitarian emergencies
- Principles in interdisciplinary aspects of Emergency in humanitarian disasters
- Cultural, social and psychological aspects in Humanitarian Disasters
- Humanitarian assistance : From theory to practice
- Case study

#### UE3 : Human and social sciences

- Resilience of population in disaster situations
- Theories and applied knowledge in psychosociology
- Environmental psychology (relations between Human-Environment and stress)
- Case study

#### UE 4 : Communication 1

- Communication and team management
- Foreign language course and European Culture

#### UE5 : Emergency medicine

- Emergency medicine and public health (legal and ethical aspects)
- Modeling medical disaster management
- Principles of emergency medicine - Exercises & Drills

#### UE 6 : Information and communication technologies

- Theories on Risk Communication
- Communication strategies (public health communication)
- Media training and drills
- Case study

#### UE 7 : Telecommunications and organization

- Heterogeneous organizations modeling
- Innovative systems for telecommunications
- Emergency communication systems
- Case study

#### UE 8 : Communication 2

- Communication, team management and leadership
- Foreign language course and European Culture

#### UE 9 : Project management

- Planning and scheduling
- Organization, Management
- Computational applications
- Case study

#### UE10: Internship(6months-30ECTS)

### LOCATION

Two semesters will be held on the main campus of école des mines in Alès and at Université de Nîmes, in the Occitanie French southern Region. The Occitanie Region is known worldwide for its businesses and research clusters in aeronautical and space sectors at Toulouse (with the headquarter of Airbus), Montpellier (the oldest Medicine University in the world), Nîmes (famous for its cultural heritage).

### ADMISSIONS REQUIREMENTS

Participants must hold a 4-year Bachelor of Science degree in the field of engineering (environmental sciences, logistics, and management) or sciences (chemistry, mechanics).

Participants holding a first experience in industry are also welcome.

### LANGUAGE REQUIREMENTS

English

- Mother tongue or
- Bachelor degree taught in English or
- English test such as TOEFL IBT 80, IELTS 6.0, TOEIC 750, Cambridge CAE.

No prerequisite in French, but TEF II or an equivalent level may be required to obtain a visa.

### APPLYING

All applications should be made on-line:

→ <http://www.mines-ales.fr/pages/master-international-damage-disaster-management-environmental-impact>

Information can be requested at :

→ [admission-damage@mines-ales.fr](mailto:admission-damage@mines-ales.fr)

Tel. +33 (0) 4 66 38 70 87

Applications are open from January to June every year.



## DAMAGE

### STRONG POINTS OF THE SCHOOL/PROGRAM

- Mines Alès is accredited by the French Ministry of Industry
- Université de Nîmes is accredited by the French Ministry of higher Education and research
- Study in Alès and Nîmes, in the south east region of France,
- International Faculty
- Masters taught in English and in small groups
- 6-month master thesis in industry or in a research lab
- Intercultural seminars
- Free French language courses
- A MSc program boosted by reputed research departments
- An international team for international students
- A quality-chartered "Welcome to International Students" package

### Competence acquired

Knowledge in basic engineering and environmental science engineering with a particular attention for research applied to industry, economy and society

### FEES AND POSSIBLE SOURCES OF FUNDING (Fees valid for 2017 Entry)

Standard fees for 24 months are :

- € 15,000 for non EU+student
- € 10,000 for EU+students (member states of the European Union + Iceland, Lichtenstein, Norway and Turkey)

Partial fee waivers may be awarded depending on the quality of students files. Some costs may be funded by certain French embassies or within the framework of agreements between certain international institutions

Compulsory basic medical insurance is about € 215 /year (covering 70% of medical treatment). An additional healthcare cover is strongly recommended for a remaining 30 (€200/year approx.)

### HIGHLIGHTS

- 6-month MSc thesis in industry or in a public research lab.
- A quality charter to welcome international students to Mines Alès international campus.
- Masters taught entirely in English and in small groups.
- Free French language courses.

### ADDRESS

Mines Alès  
6 avenue de Clavières  
30319 Alès cedex – France

### CONTACT

Website → [www.mines-ales.fr](http://www.mines-ales.fr)  
Email → [international@mines-ales.fr](mailto:international@mines-ales.fr)  
Phone → +33 4 66 78 50 00

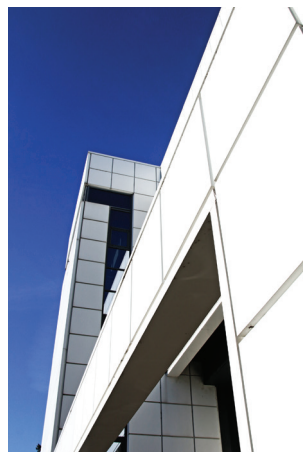
### CALENDAR

One intake per year (mid-September).

- Year 1: Two academic semesters at Mines Alès.
- Year 2: One academic semester at Mines Alès + a 6-month MSc thesis, in France or abroad.

### LODGING

Individual furnished studio apartments are available for international students during their stay. The residences are on the school campus and offer comfort and facilities to the students. Living expenses are quite low in Alès compared to other locations in France. Accommodation at the students Residence costs about € 330 per month. The total living expenses should not exceed € 6,000 per year (on campus food and accommodation).



### INSTITUT MINES - TÉLÉCOM INTERNATIONAL AFFAIRS

37-39 rue Dareau  
75014 Paris  
France

[international@mines-telecom.fr](mailto:international@mines-telecom.fr)  
[www.mines-telecom.fr](http://www.mines-telecom.fr)

